

Frequently Asked Questions (FAQs)

”Who should consider having a Coronary CTA?”

Coronary Artery Disease (CAD) is the single leading cause of death in the United States. While heart attacks occur in 1.2 million Americans every year, for 150,000 individuals, the first sign of coronary disease is sudden death. Coronary CTA may be appropriate for:

- * symptomatic patients considering stress test or elective cardiac catheterization
- * asymptomatic patients with risk factors for coronary artery disease

“What are some of the risk factors for CAD?”

Family history of heart disease
High Blood Pressure
High Cholesterol
Diabetes
Smoking
Overweight
Sedentary Lifestyle (little or no exercise)

“Will my insurance pay for this exam?”

Medicare and most 3rd party providers will cover this exam if patients have a history of chest pain or known coronary artery disease. Studies performed on high risk patients that are not symptomatic are considered “screening” and are not generally covered by insurance. These patients can obtain a referral from their primary care physician but, they must pay for the procedure “out of pocket”.

“Do I need to have X-ray Dye (contrast)?”

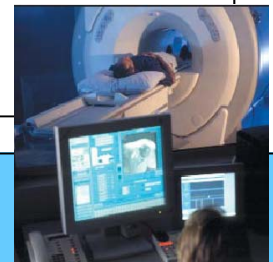
Yes. This study requires X-ray dye to be injected through a small I.V. in the arm. This dye allows the inside of the coronary arteries to be visualized. A small percentage of patients (less than 1 in 2000) have an allergic reaction to the dye. Our radiologists are prepared to treat these rare situations.

“How can I find out more about Coronary CTA?”

Call our office (610)-579-3500, or visit our website www.southeastradiology.com to find out more about how to schedule this exam. You should consult your regular physician immediately if you are currently experiencing any symptoms of heart disease (chest pain or difficulty breathing).

Southeast Medical Imaging at Brinton

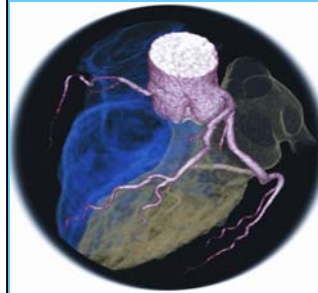
Lake is proud to be the first provider in the Delaware Valley Region of the most advanced heart scanning technology available. **Coronary CT Angiography (CTA)** can discover signs of heart disease before they become symptomatic. Creating high resolution, 3D images of the coronary arteries, Coronary CTA is able to detect disease that may not be seen on EKGs, stress tests, and calcium scoring. Because this procedure uses a CT scanner instead of catheterization, it is a **safe, painless, and non-invasive** way to screen the heart for coronary artery disease.

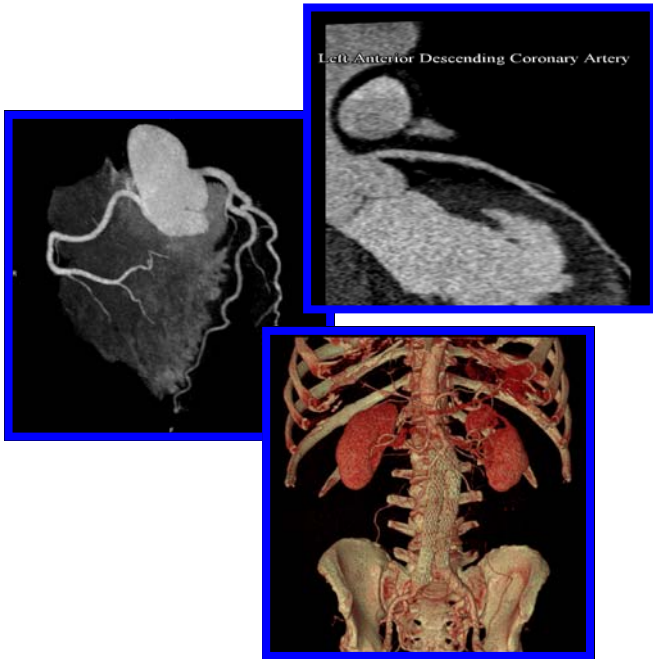


Experts in the Field

Our Board Certified and Fellowship trained Radiologists have expertise in Angiography, Cross Section Imaging/Spiral CT Scanning, 3D Digital Image Processing, and CT Coronary Angiography.

This unique combination of expert knowledge in arterial anatomy and pathophysiology, CT scanning technology, and digital image processing ensures that your study is interpreted by the best cardiac imagers in the region.





****64 Slice CT Scanner offering the highest Image quality currently available****



**Kurt Muetterties, MD
Medical Director**

**300 Evergreen Drive
Suite 210
Glen Mills, PA 19342
Brinton Lake Shopping Center,**

**610-579-3500
www.southeastradiology.com**



Coronary CT Angiography



***A Painless, Non-Invasive
Look Inside Your Heart***

Stop Worrying about your heart!

Find out today whether you have
coronary artery disease.

***As seen on Oprah and The Today
Show***